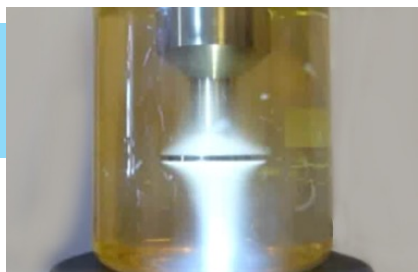


OUR PATENTED TECHNOLOGY



Industrial Sonomechanics® (ISM) offers high-intensity laboratory, bench and industrial-scale ultrasonic liquid processors, designed for the production of nanoemulsions, liposomes and nanocrystals, as well as for cell disruption, plant oil extraction, liquid degassing, nanoparticle deagglomeration, and sonochemistry.

Using ISM's patented Barbell Horn™ Ultrasonic Technology, our customers can count on reproducible post-scale-up results, where the production rates increase by orders of magnitude while the highest finished product quality is maintained.



Industrial Sonomechanics, LLC

HAVE QUESTIONS? NEED A QUOTE?

(786) 233-9255

contact@sonomechanics.com

7440 SW 50th Terrace, #110

Miami, FL 33155

FIND US ON SOCIAL MEDIA:



Industrial Sonomechanics



industrial.sonomechanics



sonomechanics



INDUSTRIAL
SONOMECHANICS®

ULTRASONIC LIQUID PROCESSORS



Industrial Sonomechanics® is a research and development, equipment design, and process consulting firm, specializing in high-intensity ultrasound for the pharmaceutical, nutraceutical, cannabis, beverage, and cosmetic industries.



INDUSTRIAL
SONOMECHANICS®

7440 SW 50th Ter. #110, Miami, FL 33155

www.sonomechanics.com

LSP-600 Laboratory-Scale Processor



The LSP-600 laboratory-scale ultrasonic liquid processor is designed for small-scale process testing and optimization.

- **MAIN COMPONENTS**
 - 600 W generator
 - Air-cooled transducer
 - Full-wave Barbell Horn® (FBH), 21 mm tip diameter
 - Reactor chamber (flow cell) with cooling jacket
- **PERIPHERAL EQUIPMENT/ ACCESSORIES**
 - Conventional horn (CH), 12.7 mm tip diameter
 - Support stand with clamp holders
 - Noise cancelling ear muffs
 - Sound enclosure
 - Storage/Mixing Vessel
 - Air blower for cooling the transducer
- **CAPACITY**
 - 30 ml - 100 ml, with CH (batch mode)
 - 100 ml - 500 ml, with FBH (batch mode)
 - 500 ml - 2 L, with FBH + reactor chamber (flow-through mode)

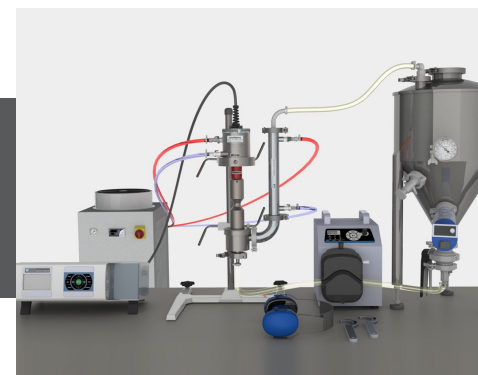
BSP-1200 Bench-Scale Processor



The BSP-1200 bench-scale ultrasonic liquid processor is designed for process optimization and medium-scale production.

- **MAIN COMPONENTS**
 - 1200 W generator
 - Water-cooled transducer
 - Half-wave Barbell Horn® (HBH), 32 mm tip diameter
 - Reactor chamber (flow cell) with cooling jacket
- **PERIPHERAL EQUIPMENT/ ACCESSORIES**
 - Full-wave Barbell Horn® (FBH), 35 mm tip diameter
 - Transducer chiller
 - Support stand with clamp holders
 - Noise cancelling ear muffs
 - Sound enclosure
- **CAPACITY**
 - 500 ml - 2 L, with FBH horn (batch mode)
 - 1 L - Unlimited, with HBH + reactor chamber (flow-through mode)
 - 5 times faster processing than with LSP-600

ISP-3600 Industrial-Scale Processor



The ISP-3600 industrial-scale ultrasonic liquid processor is designed for high-volume commercial-scale production.

- **MAIN COMPONENTS**
 - 3600 W generator
 - Water-cooled transducer
 - Half-wave Booster Half-wave Barbell Horn® (HBHB), 45 mm tip diameter
 - Reactor chamber (flow cell)
- **PERIPHERAL EQUIPMENT/ ACCESSORIES**
 - Storage/Mixing tank with mixer
 - Support stand with clamp holders
 - Transducer chiller
 - Heat exchanger
 - Noise cancelling ear muffs
 - Sound enclosure
- **CAPACITY**
 - 1 L - 10 L, with HBHB (batch mode)
 - 2 L - Unlimited, with HBHB + reactor chamber (flow-through mode)
 - 4 - 5 times faster processing than with BSP-1200
 - 20 - 25 times faster processing than with LSP-600