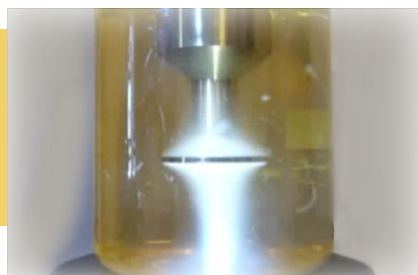


OUR PATENTED TECHNOLOGY



Industrial Sonomechanics® (ISM) is a research and development, equipment design, and process consulting firm specializing in high-intensity ultrasound for the cannabis, pharmaceutical, nutraceutical, and cosmetic industries.

Using ISM's patented Barbell Horn™ Ultrasonic Technology, our customers can expect reproducible post-scale-up results, where the production rates increase by orders of magnitude while the highest finished product quality is maintained.

HAVE QUESTIONS? NEED A QUOTE?

(786) 233-9255

contact@sonomechanics.com

7440 SW 50th Terrace, #110

Miami, FL 33155



NANOSTABILIZER™

For Producing Water-Compatible
Cannabis Extracts

FIND US ON SOCIAL MEDIA:



Industrial Sonomechanics



[industrial.sonomechanics](https://www.facebook.com/industrial.sonomechanics)



[sonomechanics](https://twitter.com/sonomechanics)

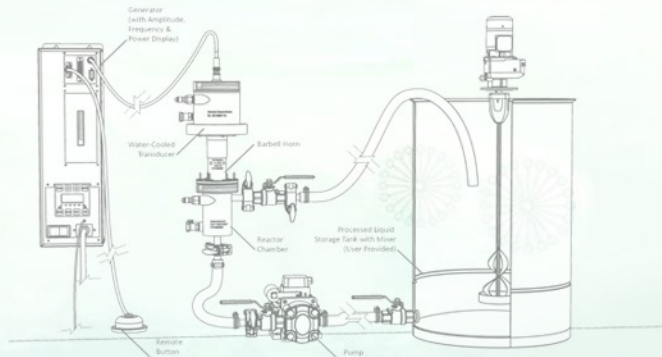
- Improve the bioavailability
- Retain optical clarity
- Infuse beverages, edibles or topicals
- Shorten the onset of action
- Ensure precise dosing and predictable effects
- Achieve water-compatibility and permanent stability

You do not have to be a chemist
to make water-soluble CBD and THC!



NanoStabilizers® for Producing Cannabis Extract Nanoemulsions

All You Need to Make Water-Compatible CBD and THC



Overview

No need to develop formulations and production protocols! You can now make food- and pharmaceutical-grade, water-compatible, translucent nanoemulsions of cannabis extracts and isolates using our NanoStabilizers® and ultrasonic liquid processors.



All the required R&D is in this jar!

Benefits

- Quickly and easily manufacture water-soluble nanoemulsions and/or other bioactives.
- Enhance the bioavailability and accelerate the onset of action.
- Ensure precise and reproducible therapeutic dosing.
- Infuse water with a strong medicinal dose while retaining optical clarity.
- Achieve droplet sizes of about 20 – 40 nanometers, ensuring translucency and permanent stability.
- Easily sterile-filter to remove any microbial contamination.

How it Works

NanoStabilizer™ already includes all the necessary components – it is a proprietary blend of tasteless, food-grade (GRAS) carrier oils, emulsifiers, and preservatives, all derived from natural sources. Use it in conjunction with our ultrasonic processors to make translucent nanoemulsions of any cannabis extract.

What you need to have:

- Cannabis extract or isolate
- Distilled water
- ISM ultrasonic processor
- NanoStabilizer® -LT or LSO
- Basic lab equipment

What you need to do:

- Follow the provided step-by-step instructions to make the nanoemulsion
- Dose the nanoemulsion into your finished product (e.g., beverage, cream, edible)